

 **BOEING**  
COMPONENT  
MAINTENANCE MANUAL

TO: ALL HOLDERS OF THERMAL ANTI-ICING DUCT SEAL DOOR ASSEMBLY COMPONENT  
MAINTENANCE MANUAL 57-41-10.

REVISION NO. 3 DATED JUN 01/95

HIGHLIGHTS

Pages which have been added or revised are outlined below together with the highlights of the revision. Remove and insert the affected pages as listed and enter Revision No. and date on the Record of Revision Sheet.

CHAPTER/SECTION

AND PAGE NO.

DESCRIPTION OF CHANGE

TITLE PAGE

Added door assemblies 114T0201-31, -32 with stronger hinges and a better fit per MRR6573-020 and SB 57-0045.

1

TR & SB RECORD

1

1002,1004-1007,  
1009-1013,1015-1019

TITLE PAGE

Added clarification and details.

1

DESCRIPTION & OPERATION

1

REPAIR 2-1

601

TR & SB RECORD

1

Added PRR B11199 to the list for the 114T0224-5 hinge used on the latest doors.

REPAIR-GEN

Changed refinish callouts.

601

REPAIR 2-1

601

**57-41-10**

HIGHLIGHTS

01.1

Page 1

Jun 01/95

# THERMAL ANTI-ICING DUCT SEAL DOOR ASSEMBLY

PART NUMBERS 114T0201-15,-16,-23,-24,-27,-28,  
-31,-32

COMPONENT MAINTENANCE MANUAL  
WITH  
ILLUSTRATED PARTS LIST

**57-41-10**

TITLE PAGE

Page 1

Jun 01/95

01.1



REVISION RECORD

- Retain this record in front of manual. On receipt of revision, insert revised pages in the manual, and enter revision number, date inserted and initial.

REVISION NUMBER	REVISION DATE	DATE FILED	BY	REVISION NUMBER	REVISION DATE	DATE FILED	BY

**57-41-10**

REVISION RECORD

01

Page 1

Jul 10/84


**BOEING**  
 COMPONENT  
 MAINTENANCE MANUAL
TEMPORARY REVISION AND SERVICE BULLETIN RECORD

BOEING SERVICE BULLETIN	BOEING TEMPORARY REVISION	OTHER DIRECTIVE	DATE OF INCORPORATION INTO MANUAL
57-0045		PRR B11199 MRR 6573-020	OCT 01/88 JUN 01/95

**57-41-10**

TR &amp; SB RECORD

01.1

Page 1

Jun 01/95


**BOEING**  
 COMPONENT  
 MAINTENANCE MANUAL

PAGE	DATE	CODE	PAGE	DATE	CODE
57-41-10			REPAIR 1-1		
			601	OCT 01/88	01.1
			602	BLANK	
TITLE PAGE			REPAIR 2-1		
*1	JUN 01/95	01.1	*601	JUN 01/95	01.1
2	BLANK		602	BLANK	
REVISION RECORD			FITS AND CLEARANCES		
1	JUL 10/84	01	801	OCT 01/92	01.1
2	BLANK		802	OCT 01/92	01.1
TR & SB RECORD			ILLUSTRATED PARTS LIST		
*1	JUN 01/95	01.1	1001	JUL 10/84	01
2	BLANK		*1002	JUN 01/95	01.1
LIST OF EFFECTIVE PAGES			*1003	JUN 01/95	01.1
*1	JUN 01/95	01	*1004	JUN 01/95	01.1
THRU LAST PAGE			*1005	JUN 01/95	01.1
CONTENTS			*1006	JUN 01/95	01.1
1	JUL 10/84	01	*1007	JUN 01/95	01.1
2	BLANK		*1008	JUN 01/95	01.1
INTRODUCTION			*1009	JUN 01/95	01.1
1	OCT 01/88	01.1	*1010	JUN 01/95	01.1
2	BLANK		*1011	JUN 01/95	01.1
DESCRIPTION & OPERATION			*1012	JUN 01/95	01.1
*1	JUN 01/95	01.1	*1013	JUN 01/95	01.1
2	BLANK		*1014	JUN 01/95	01.1
CLEANING			*1015	JUN 01/95	01.1
401	JUL 10/84	01	*1016	JUN 01/95	01.1
402	BLANK		*1017	JUN 01/95	01.1
CHECK			*1018	JUN 01/95	01.1
501	OCT 01/88	01.1	*1019	JUN 01/95	01.1
502	BLANK		*1020	BLANK	
REPAIR-GENERAL					
*601	JUN 01/95	01.1			
602	BLANK				

\* = REVISED, ADDED OR DELETED

**57-41-10**
 EFFECTIVE PAGES  
 LAST PAGE Page 1  
 01 Jun 01/95



TABLE OF CONTENTS

<u>Paragraph Title</u>	<u>Page</u>
Description and Operation . . . . .	1
Testing and Trouble Shooting (not applicable)	
Disassembly . . . . .*[1]	
Cleaning. . . . .	401
Check . . . . .	501
Repair. . . . .	601
Assembly. . . . .*[1]	
Fits and Clearances . . . . .	801
Special Tools (not applicable)	
Illustrated Parts List. . . . .	1001

\*[1] Special instructions not required. Use standard industry practices.

**57-41-10**

CONTENTS

Page 1

Jul 10/84

01



## INTRODUCTION

The instructions in this manual provide the information necessary to perform maintenance functions ranging from simple checks and replacement to complete shop-type repair.

This manual is divided into separate sections:

- |  |                              |
|--|------------------------------|
| 1. Title Page                                      | 4. List of Effective Pages   |
| 2. Record of Revisions                             | 5. Table of Contents         |
| 3. Temporary Revision &<br>Service Bulletin Record | 6. Introduction              |
|  | 7. Procedures & IPL Sections |

Refer to the Table of Contents for the page location of applicable sections. An asterisked flagnote \*[ ] in place of the page number indicates that no special instructions are provided since the function can be performed using standard industry practices.

The beginning of the REPAIR section includes a list of the separate repairs, and a list of applicable standard Boeing practices.

An explanation of the use of the Illustrated Parts List is provided in the Introduction to that section.

All weights and measurements used in the manual are in English units, unless otherwise stated. When metric equivalents are given they will be in parentheses following the English units.

Design changes, optional parts, configuration differences and Service Bulletin modifications create alternate part numbers. These are identified in the Illustrated Parts List (IPL) by adding an alphabetical character to the basic item number. The resulting item number is called an alpha-variant. Throughout the manual, IPL basic item number references also apply to alpha-variants unless otherwise indicated.

# 57-41-10

INTRODUCTION

01.1

Page 1

Oct 01/88



THERMAL ANTI-ICING DUCT SEAL DOOR ASSEMBLY

DESCRIPTION AND OPERATION

1. Description and Operation

- A. The thermal anti-icing duct seal door assembly is a bonded door with hinges attached to each end. The bonded door assembly has a honeycomb core sandwiched between plies of outer and inner skin surfaces.
- B. When this seal door is installed in the airplane it becomes a seal for the thermal anti-icing duct of the wing outboard leading edge.

2. Leading Particulars (Approximate)

Length -- 12 inches  
Width -- 3 inches  
Thickness -- 0.33 inch  
Weight -- 1 pound

57-41-10

DESCRIPTION & OPERATION

01.1

Page 1

Jun 01/95





CLEANING

1. Clean all parts using standard industry practices and information contained in 20-30-03.

CAUTION: DO NOT USE CHLORIDE CLEANING SOLUTIONS ON GRAPHITE/EPOXY HONEYCOMB SANDWICH MATERIALS. CHLORIDE CLEANING SOLUTIONS SUCH AS METHYLENE CHLORIDE AND TRICHLOROETHYLENE ARE HARMFUL TO THE EPOXY RESIN IN HONEYCOMB MATERIALS.

57-41-10

01  
CLEANING  
Page 401  
Jul 10/84

CHECK

1. Check all parts for obvious defects in accordance with standard industry practices.
2. Magnetic particle check per 20-20-01.
  - | A. Hinge (40, IPL Fig. 1,2)
3. Penetrant check per 20-20-02.
  - | A. Hinge (70, IPL Fig. 1,2)
4. Check honeycomb and bonded parts for evidence of delamination, internal water, scratches, and contour defects.
  - A. Examine ultrasonically for delamination.
  - B. Examine radiographically areas suspected of containing water to determine extent of damage.
  - C. Examine edges of panel carefully for cuts and abrasions. Delamination starts easily from damage to an edge member of honeycomb panel.
5. Refer to 767 Structural Repair Manual, 54-21-01 for allowable damage data.

**57-41-10**

CHECK

01.1

Page 501

Oct 01/88

REPAIR – GENERAL1. Content

- A. Repair, refinish, and replacement procedures are included in separate repair sections as follows:

<u>P/N</u>	<u>NAME</u>	<u>REPAIR</u>
114T0244	HINGE ASSY	1-1
- - -	MISC PARTS REFINISH	2-1

2. Standard Practices

- A. Refer to the following standard practices as applicable, for details of procedures in individual repairs.

| 20-10-06 Repair of Conductive Coatings  
 20-30-03 General Cleaning Procedures  
 20-41-01 Decoding Table for Boeing Finish Codes  
 20-43-01 Chromic Acid Anodizing  
 20-50-03 Bushing Installation and Retention

3. Materials

NOTE: Equivalent substitutes may be used.

- A. Primer -- BMS 10-11, type 1 (Ref 20-60-02)
- | B. Conductive Coating -- BMS 10-21, type 3 (Ref 20-60-02)
- C. Static Conditioner -- Dexter 28-C-1 (Ref 20-60-02)  
 -- Epocast 156 (Ref 20-60-02)
- D. Sealant -- BMS 5-95 (Ref 20-60-04)

57-41-10

REPAIR-GENERAL

01.1

Page 601

Jun 01/95



HINGE ASSEMBLY – REPAIR 1-1

114T0224-1, -3, -5

NOTE: Refer to REPAIR-GEN for list of applicable standard practices.

1. Bushing Replacement (35, 65, IPL Fig. 1, 2)

- A. Remove bushings.
- B. Install new bushings with wet BMS 5-95 sealant per 20-50-03.
- C. Fillet seal bushing flange with BMS 5-95 sealant.

**57-41-10**

REPAIR 1-1

01.1

Page 601

Oct 01/88


**BOEING**  
 COMPONENT  
 MAINTENANCE MANUAL
MISCELLANEOUS PARTS REFINISH – REPAIR 2-1

1. Repair of parts listed in Fig. 601 is only replacement of the original finish. Refer to REPAIR-GENERAL for a list of applicable standard practices.

PART NAME AND NUMBER	MATERIAL	FINISH
Bonded door assembly 114T0218-1, -5	--	Prepare inner and outer surfaces per SOPM 20-10-06 (SRF-14.672). On the outer surface, apply BMS 10-21 conductive coating (SRF-14.685) and BMS 10-79 type 2 primer (F-19.46). On the inner surface, apply gray tedlar film, or primer BMS 10-11, Type 1 (F-20.02) and enamel BMS 10-60 SRF-14.9813).
Hinge 114T0224-2	15-5PH CRES, not heat treated	Passivate (F-17.09).
Hinge 114T0224-4, -6	Al alloy	Chromic acid anodize and apply primer, BMS 10-11, type 1 (F-18.13) all over.

Refinish Details  
 Figure 601

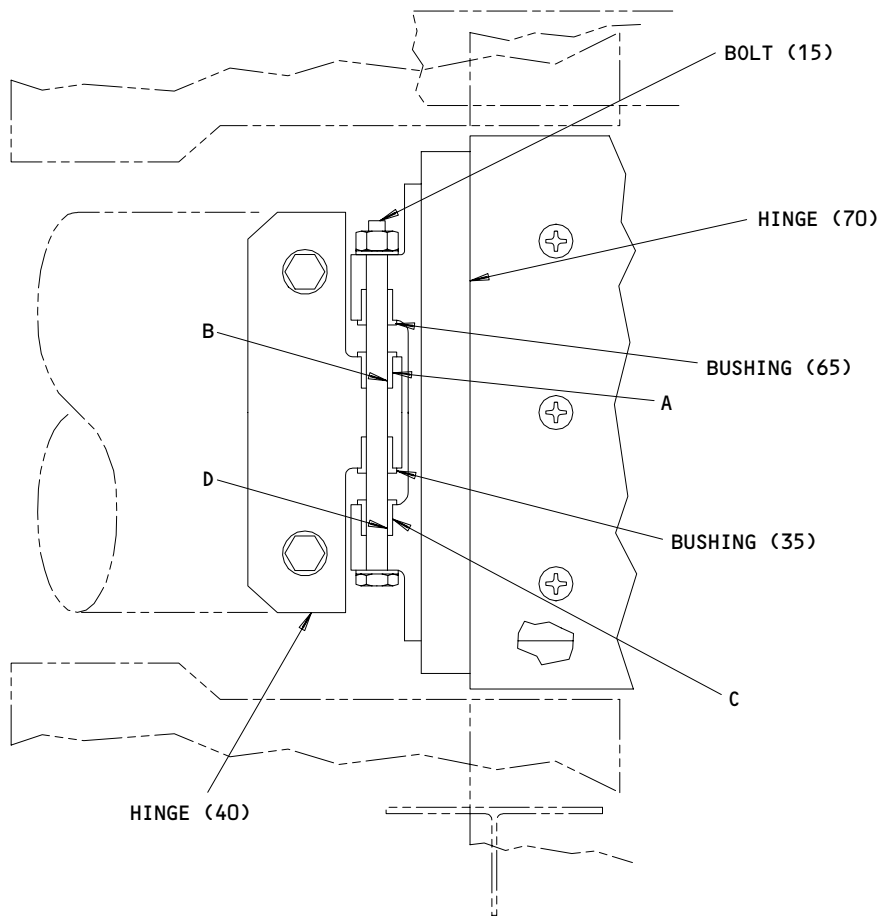
**57-41-10**

REPAIR 2-1

01.1

Page 601

Jun 01/95

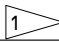


ITEM NUMBERS REFER TO IPL FIG. 1 AND 2

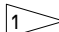
Fits and Clearances  
Figure 801 (Sheet 1)

**57-41-10**

FITS AND CLEARANCES  
01.1 Page 801  
Oct 01/92

Ref Letter Fig.801	Mating IPL Fig. No.- Item No.	Design Dimensions				Service Wear Limits		
		Dimensions		Assembly Clearance 		Dimensions		Maximum Clearance
		Min	Max	Min	Max	Min	Max	
A	ID 1-40	0.3122	0.3127	-0.0014	-0.0004			
	OD 1-35	0.3131	0.3136					
B	ID 1-35	0.1900	0.1915	0.0005	0.0030			
	OD 1-15	0.1885	0.1895					
C	ID 1-70	0.3122	0.3127	-0.0014	-0.0004			
	OD 1-65	0.3131	0.3136					
D	ID 1-65	0.1900	0.1915	0.0005	0.0030			
	OD 1-15	0.1885	0.1895					
A	ID 2-40	0.3122	0.3127	-0.0014	-0.0004			
	OD 2-35	0.3131	0.3136					
B	ID 2-35	0.1900	0.1915	0.0005	0.0030			
	OD 2-15	0.1885	0.1895					
C	ID 2-70	0.3122	0.3127	-0.0014	-0.0004			
	OD 2-65	0.3131	0.3136					
D	ID 2-65	0.1900	0.1915	0.0005	0.0030			
	OD 2-15	0.1885	0.1895					

ALL DIMENSIONS ARE IN INCHES

 NEGATIVE VALUES INDICATE INTERFERENCE FIT.

Fits and Clearances  
Figure 801 (Sheet 2)

**57-41-10**

FITS AND CLEARANCES  
01.1 Page 802  
Oct 01/92



ILLUSTRATED PARTS LIST

1. This section lists and illustrates replaceable or repairable component parts. The Illustrated Parts Catalog contains a complete explanation of the Boeing part numbering system.

2. Indentures show parts relationships as follows:

Assembly

Detail Parts for Assembly

Subassembly

Attaching Parts for Subassembly

Detail Parts for Subassembly

Detail Installation Parts (Included only if installation parts may be returned to shop as part of assembly)

3. One use code letter (A, B, C, etc.) is assigned in the EFF CODE column for each variation of top assembly. All listed parts are used on all top assemblies except when limitations are shown by use code letter opposite individual part entries.

4. Letter suffixes (alpha-variants) are added to item numbers for optional parts, Service Bulletin modification parts, configuration differences (Except left- and right-hand parts), product improvement parts, and parts added between two sequential item numbers. The alpha-variant is not shown on illustrations when appearance and location of all variants of the part is the same.

5. Service Bulletin modifications are shown by the notations PRE SB XXXX and POST SB XXXX.

A. When a new top assembly part number is assigned by Service Bulletin, the notations appear at the top assembly level only. The configuration differences at detail part level are then shown by use code letter.

B. When the top assembly part number is not changed by the Service Bulletin, the notations appear at the detail part level.

6. Parts Interchangeability

Optional  
(OPT)

The parts are optional to and interchangeable with other parts having the same item number.

Supersedes, Superseded By  
(SUPSDS, SUPSD BY)

The part supersedes and is not interchangeable with the original part.

Replaces, Replaced By  
(REPLS, REPLD BY)

The part replaces and is interchangeable with, or is an alternate to, the original part.

**57-41-10**

ILLUSTRATED PARTS LIST

01

Page 1001

Jul 10/84



VENDORS

10630 ANILLO INDUSTRIES, INCORPORATED  
2090 NORTH GLASSELL  
ORANGE, CALIFORNIA 92667

15653 MICRODOT INC AEROSPACE FASTENING SYS KAYNAR MFG DIV  
800 SOUTH STATE COLLEGE BLVD PO BOX 3001  
FULLERTON, CALIFORNIA 92634-3001

52828 REPUBLIC FASTENER MFG CORP  
1300 RANCHO CONEJO BLVD  
NEWBURY PARK, CALIFORNIA 91320-1405

56878 SPS TECHNOLOGIES INC AEROSPACE AND INDUSTRIAL PRODUCTS DIV  
HIGHLAND AVENUE  
JENKINTOWN, PENNSYLVANIA 19046

71087 BOOTS ACFT NUT DIV TOWNSEND CO SEE TEXTRON INC CHERRY  
FASTENER TOWNSEND DIV V11815

72962 ELASTIC STOP NUT A DIV OF HARTFORD INDUSTRIES INC  
2330 VAUXHALL ROAD  
UNION, NEW JERSEY 07083-5038

80539 SPS TECHNOLOGIES INC AEROSPACE PRODUCTS DIV  
2701 SOUTH HARBOR BOULEVARD PO BOX 1259  
SANTA ANA, CALIFORNIA 92702-1259

91812 JANCO CORPORATION  
3111 WINONA AVENUE,PO BOX 3038  
BURBANK, CALIFORNIA 91504-2543

92215 FAIRCHILD IND INC FAIRCHILD AEROSP FASTNR DIV DESIGN & ENGRG  
3000 WEST LOMITA BLVD  
TORRANCE, CALIFORNIA 90505-5102

57-41-10

ILLUSTRATED PARTS LIST  
01.1 Page 1002  
Jun 01/95

VENDORS

92595      AUTOMATIC SCREW MACHINE PRODUCTS CO  
            PO BOX 1608 709 2ND AVENUE SE  
            DECATUR, ALABAMA 35602

**57-41-10**

ILLUSTRATED PARTS LIST

01.1      Page 1003

Jun 01/95

PART NUMBER	AIRLINE PART NO.	FIG.	ITEM	TTL REQ
AN960KD10		1	140	1
		2	135	1
AN960PD10		1	55	1
		1	90	3
		1	170	1
		2	55	2
		2	165	1
BACB28X3F040		1	35	2
		2	35	2
BACB28X3M040		1	65	2
		2	65	2
BACB30LR3-4		1	135	1
BACB30LR3-8		2	130	1
BACB30NM3K4		1	50	1
		2	50	2
BACB30NN3K4		1	85	3
		1	165	1
BACB30NN3K5		2	160	1
BACB30NN3K6		2	85	4
BACF3T03E42-8		1	110	1
BACF3T03E42-9		2	100	1
BACF3T03G42-8		1	195A	1
BACF3T03G46-8		1	200A	1
BACF3T06J46-8		2	190A	1
BACJ40AB20-6		1	150	1
		2	145	1
BACN10JC3		1	60	1
		1	95	3
		1	145	1
		1	175	1
		2	60	2
		2	140	1
		2	170	1
BACN10JD3		1	25	1
		2	25	1
BACN10YK3A010-4		2	90	1
BACR15BA3AD		1	105	2
		1	190	4
		2	95	2
		2	185	4

57-41-10

 ILLUSTRATED PARTS LIST  
 01.1 Page 1004  
 Jun 01/95


**BOEING**  
 COMPONENT  
 MAINTENANCE MANUAL

PART NUMBER	AIRLINE PART NO.	FIG.	ITEM	TTL REQ
BACR15BA6AD		1	180	1
		2	175	1
BACS40R8C45F		1	185	1
		2	180	1
BACW10BP3DP		1	20	1
		1	20A	2
		2	20	1
		2	20A	2
BCREFA2469		2	90A	1
		1	60	1
BRH10A3		1	95	3
		1	145	1
		1	175	1
		2	60	2
		2	140	1
		2	170	1
		2	90	1
		1	60	1
		1	95	3
		1	145	1
G12447-1-3010-4 H10-3BAC		1	175	1
		2	60	2
		2	140	1
		2	170	1
		2	210	1
		2	110	1
		1	120	1
		1	210	1
		1	10	1
		2	10	1
MS51923-130		1	115	2
		1	205	2
		2	205	2
MS51923-132		2	105	2
		1	15A	1
NAS6703-46		2	15A	1
NAS6703DG46		1	15B	1
		2	15B	1
NAS6703DG48		1	15	1
		2	15	1
NS202101-02		1	60	1
		1	95	3
		1	145	1
		1	175	1
		2	60	2
		2	140	1
		2	170	1
		2	170	1

57-41-10

ILLUSTRATED PARTS LIST

01.1

Page 1005

Jun 01/95

PART NUMBER	AIRLINE PART NO.	FIG.	ITEM	TTL REQ
NS202596-3-1010 RMLH9075-3W		2	90	1
		1	60	1
		1	95	3
		1	145	1
		1	175	1
		2	60	2
		2	140	1
T6S1032J		2	170	1
		1	60	1
		1	95	3
		1	145	1
		1	175	1
		2	60	2
		2	140	1
VN303A02		2	170	1
		1	60	1
		1	95	3
		1	145	1
		1	175	1
		2	60	2
		2	140	1
114T0201-13		2	170	1
		1	15A	1
		2	15A	1
114T0201-15		1	1	RF
114T0201-16		1	5	RF
114T0201-23		1	1A	RF
		2	1	RF
114T0201-24		1	5A	RF
		2	5	RF
114T0201-27		1	1B	RF
		2	1A	RF
114T0201-28		1	5B	RF
		2	5A	RF
114T0201-31		1	1C	RF
		2	1B	RF
114T0201-32		1	5C	RF
		2	5B	RF
114T0218-1		1	225	1
114T0218-5		2	235	1
114T0219-2		1	130	1
114T0219-3		2	125	1
114T0220-11		1	220	1
114T0220-12		1	215	1

57-41-10

 ILLUSTRATED PARTS LIST  
 01.1 Page 1006  
 Jun 01/95

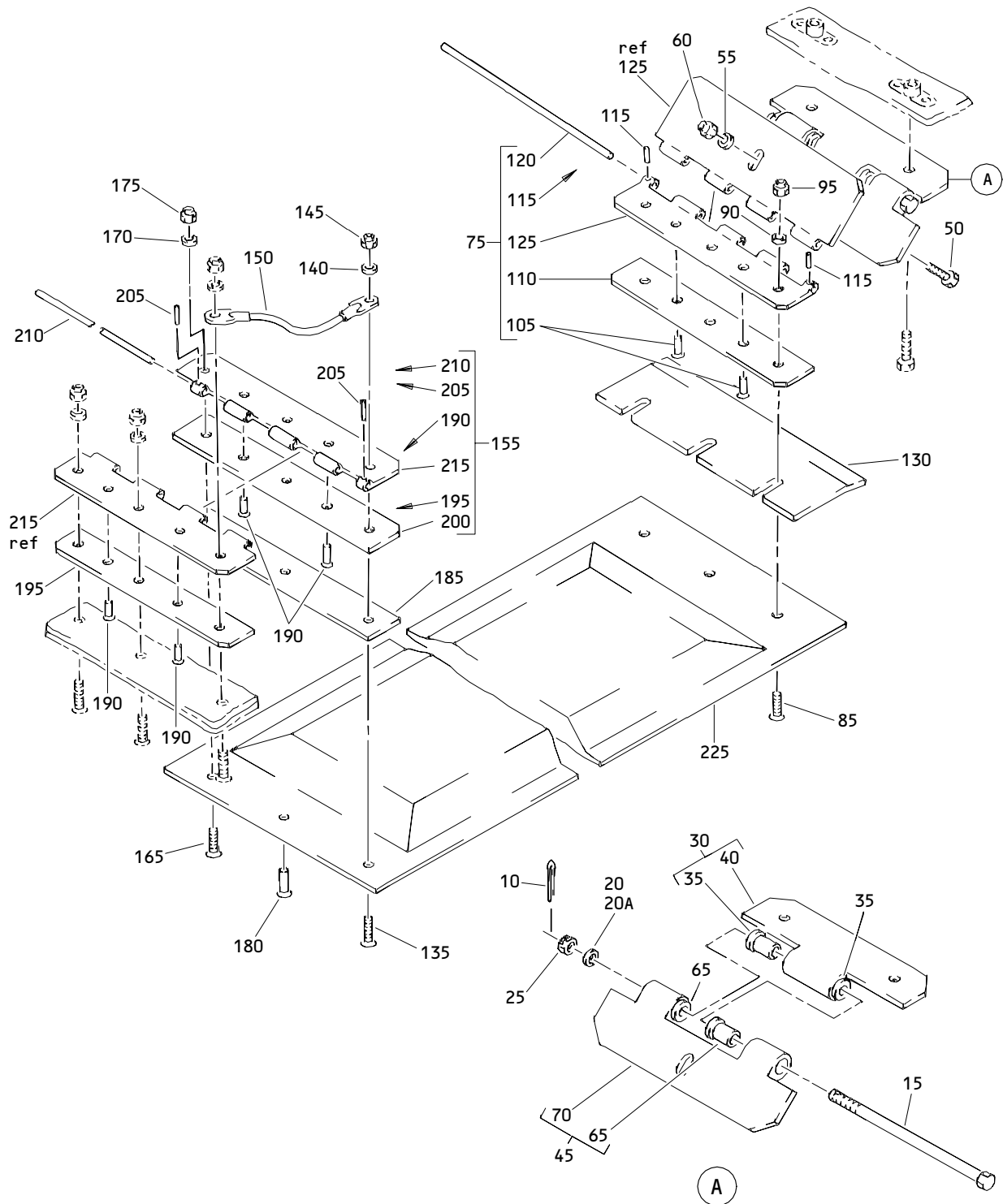


**BOEING**  
 COMPONENT  
 MAINTENANCE MANUAL

PART NUMBER	AIRLINE PART NO.	FIG.	ITEM	TTL REQ
114T0220-13		1	155	1
114T0220-14		1	160	1
114T0220-15		1	75	1
114T0220-16		1	80	1
114T0220-17		1	125	1
114T0220-19		2	75	1
114T0220-20		2	80	1
114T0220-21		2	150	1
114T0220-22		2	155	1
114T0220-27		2	215	1
114T0220-28		2	220	1
114T0220-29		2	225	1
114T0220-30		2	230	1
114T0220-31		2	195	1
114T0220-32		2	200	1
114T0220-33		2	150A	1
114T0220-34		2	155A	1
114T0220-35		2	150B	1
114T0220-36		2	155B	1
114T0220-37		2	225A	1
114T0220-38		2	230A	1
114T0220-39		2	195A	1
114T0220-40		2	200A	1
114T0224-1		1	30	1
		2	30	1
114T0224-2		1	40	1
		2	40	1
114T0224-23		2	115	1
114T0224-24		2	120	1
114T0224-3		1	45	1
114T0224-4		1	70	1
114T0224-5		2	45	1
114T0224-6		2	70	1
940CW20-6		1	150	1
		2	145	1
96-02		1	60	1
		1	95	3
		1	145	1
		1	175	1
		2	60	2
		2	140	1
		2	170	1

**57-41-10**

ILLUSTRATED PARTS LIST  
 01.1 Page 1007  
 Jun 01/95



Outboard Wing Fixed Leading Edge Thermal Anti-Icing Duct Seal Door Assembly  
 Figure 1

**57-41-10**

ILLUSTRATED PARTS LIST  
 01.1 Page 1008  
 Jun 01/95


**BOEING**  
 COMPONENT  
 MAINTENANCE MANUAL

FIG. & ITEM	PART NO.	AIRLINE PART NUMBER	NOMENCLATURE 1234567	EFF CODE	QTY PER ASSY
01- -1	114T0201-15		DOOR ASSY-OUTBD WING FXD LE THRM ANTI-ICING DUCT SEAL	A	RF
-1A	114T0201-23		DOOR ASSY-OUTBD WING FXD LE THRM ANTI-ICING DUCT SEAL (FOR DETAILS SEE FIG. 2)	E	RF
-1B	114T0201-27		DOOR ASSY-OUTBD WING FXD LE THRM ANTI-ICING DUCT SEAL (FOR DETAILS SEE FIG. 2)	C	RF
R -1C	114T0201-31		DOOR ASSY-OUTBD WING FXD LE THRM ANTI-ICING DUCT SEAL (FOR DETAILS SEE FIG. 2)	G	RF
-5	114T0201-16		DOOR ASSY-OUTBD WING FXD LE THRM ANTI-ICING DUCT SEAL	B	RF
-5A	114T0201-24		DOOR ASSY-OUTBD WING FXD LE THRM ANTI-ICING DUCT SEAL (FOR DETAILS SEE FIG. 2)	F	RF
-5B	114T0201-28		DOOR ASSY-OUTBD WING FXD LE THRM ANTI-ICING DUCT SEAL (FOR DETAILS SEE FIG. 2)	D	RF
R -5C	114T0201-32		DOOR ASSY-OUTBD WING FXD LE THRM ANTI-ICING DUCT SEAL (FOR DETAILS SEE FIG. 2)	H	RF
10	MS24665-153		.PIN-COTTER	A,B	1
15	NAS6703DG48		.BOLT- (OPT ITEM 15A USED WITH ITEM 20) (OPT ITEM 15B USED WITH ITEM 20) (USED WITH ITEM 20A)	A,B	1
-15A	114T0201-13		.BOLT- (ALT FROM NAS6703-46) (OPT ITEM 15 USED WITH 020A) (OPT ITEM 15B USED WITH ITEM 20) (USED WITH ITEM 20)	A,B	1
-15B	NAS6703DG46		.BOLT- (OPT ITEM 15 USED WITH ITEM 20A) (OPT ITEM 15A USED WITH ITEM 20) (USED WITH ITEM 20)	A,B	1

57-41-10

ILLUSTRATED PARTS LIST

01.1

Page 1009

Jun 01/95



FIG. & ITEM	PART NO.	AIRLINE PART NUMBER	NOMENCLATURE 1234567	EFF CODE	QTY PER ASSY
01-20	BACW10BP3DP		.WASHER- (V10630) (SPEC BACW10BP3DP) (USED WITH ITEMS 15A, 15B)	A,B	1
20A	BACW10BP3DP		.WASHER- (V10630) (SPEC BACW10BP3DP) (USED WITH ITEM 15)	A,B	2
25	BACN10JD3		.NUT- (V15653) (SPEC BACN10JD3) (OPT BACN10JD3 (V56878)) (OPT BACN10JD3 (V72962)) (OPT BACN10JD3 (V92595))	A,B	1
R 30	114T0224-1		.HINGE ASSY-HALF	A,B	1
35	BACB28X3F040		..BUSHING	A,B	2
40	114T0224-2		..HINGE	A,B	1
R 45	114T0224-3		.HINGE ASSY-HALF ATTACHING PARTS	A,B	1
50	BACB30NM3K4		.BOLT	A,B	1
55	AN960PD10		.WASHER	A,B	1
60	H10-3BAC		.NUT- (V15653) (SPEC BACN10JC3) (OPT NS202101-02 (V80539)) (OPT RMLH9075-3W (V72962)) (OPT T6S1032J (V71087)) (OPT VN303A02 (V92215)) (OPT 96-02 (V80539)) (OPT BRH10A3 (V52828)) -----*	A,B	1
65	BACB28X3M040		..BUSHING	A,B	2
70	114T0224-4		..HINGE	A,B	1
R 75	114T0220-15		.HINGE ASSY	A	1
R -80	114T0220-16		.HINGE ASSY	B	1

57-41-10

 ILLUSTRATED PARTS LIST  
 01.1 Page 1010  
 Jun 01/95


**BOEING**  
 COMPONENT  
 MAINTENANCE MANUAL

FIG. & ITEM	PART NO.	AIRLINE PART NUMBER	NOMENCLATURE 1234567	EFF CODE	QTY PER ASSY
01-					
85	BACB30NN3K4		ATTACHING PARTS		
90	AN960PD10		.BOLT	A,B	3
95	H10-3BAC		.WASHER	A,B	3
			.NUT-	A,B	3
			(V15653)		
			(SPEC BACN10JC3)		
			(OPT NS202101-02		
			(V80539))		
			(OPT RMLH9075-3W		
			(V72962))		
			(OPT T6S1032J		
			(V71087))		
			(OPT VN303A02		
			(V92215))		
			(OPT 96-02		
			(V80539))		
			(OPT BRH10A3		
			(V52828))		
			-----*		
105	BACR15BA3AD		..RIVET-	A,B	2
			(SIZE DETERMINE ON INST)		
110	BACF3T03E42-8		..FILLER	A,B	1
115	MS51923-130		..PIN-SPR	A,B	2
120	MS20253P2-420		..PIN-HINGE	A,B	1
125	114T0220-17		..HINGE	A,B	1
130	114T0219-2		.SEAL-	A,B	1
			(MFD FROM EXTR RUBBER		
			F25.01 10-60754-320		
			4.60 IN.)		
135	BACB30LR3-4		.BOLT	A,B	1
140	AN960KD10		.WASHER	A,B	1

57-41-10

ILLUSTRATED PARTS LIST

01.1

Page 1011

Jun 01/95

FIG. & ITEM	PART NO.	AIRLINE PART NUMBER	NOMENCLATURE 1234567	EFF CODE	QTY PER ASSY
01-145	H10-3BAC		.NUT- (V15653) (SPEC BACN10JC3) (OPT NS202101-02 (V80539)) (OPT RMLH9075-3W (V72962)) (OPT T6S1032J (V71087)) (OPT VN303A02 (V92215)) (OPT 96-02 (V80539)) (OPT BRH10A3 (V52828))	A,B	1
150	940CW20-6		.JUMPER ASSY- (V91812) (SPEC BACJ40AB20-6)	A,B	1
R 155	114T0220-13		.HINGE ASSY	A	1
R -160	114T0220-14		.HINGE ASSY ATTACHING PARTS	B	1
165	BACB30NN3K4		.BOLT	A,B	1
170	AN960PD10		.WASHER	A,B	1
175	H10-3BAC		.NUT- (V15653) (SPEC BACN10JC3) (OPT NS202101-02 (V80539)) (OPT RMLH9075-3W (V72962)) (OPT T6S1032J (V71087)) (OPT VN303A02 (V92215)) (OPT 96-02 (V80539)) (OPT BRH10A3 (V52828))	A,B	1

57-41-10

ILLUSTRATED PARTS LIST

01.1

Page 1012

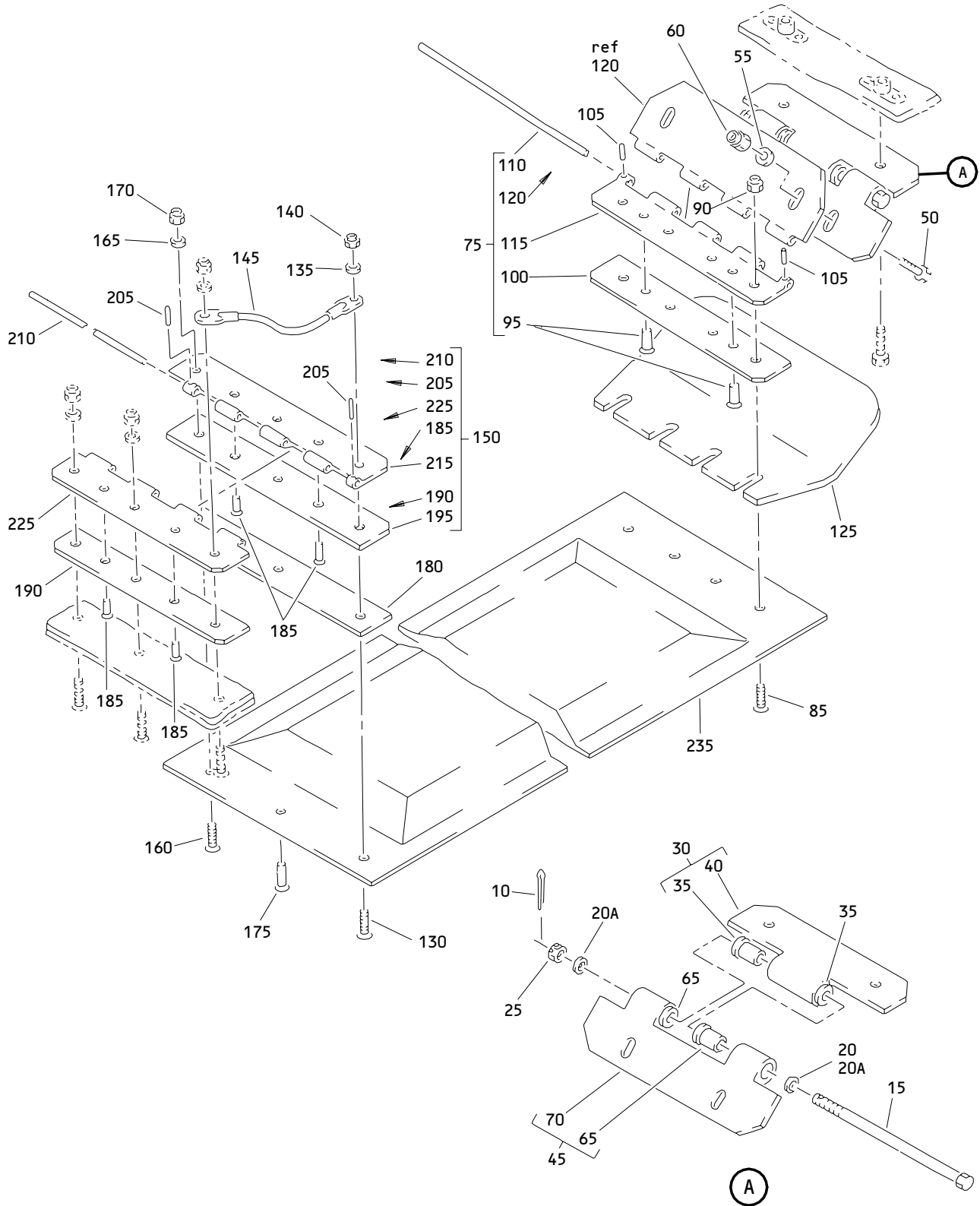
Jun 01/95

**BOEING**  
 COMPONENT  
 MAINTENANCE MANUAL

FIG. & ITEM	PART NO.	AIRLINE PART NUMBER	NOMENCLATURE 1234567	EFF CODE	QTY PER ASSY
01-180	BACR15BA6AD		.RIVET- (SIZE DETERMINE ON INST)	A,B	1
185	BACS40R8C45F		.SHIM -----*-----	A,B	1
190	BACR15BA3AD		..RIVET- (SIZE DETERMINE ON INST)	A,B	4
195	BACF3T03G40-8		DELETED		
R 195A	BACF3T03G42-8		..FILLER	A,B	1
200	BACF3T03G45-8		DELETED		
R 200A	BACF3T03G46-8		..FILLER	A,B	1
205	MS51923-130		..PIN-SPR	A,B	2
210	MS20253P2-460		..PIN-HINGE	A,B	1
215	114T0220-12		..HINGE	A	1
-220	114T0220-11		..HINGE	B	1
225	114T0218-1		.DOOR ASSY-BONDED	A,B	1

**57-41-10**

ILLUSTRATED PARTS LIST  
 01.1 Page 1013  
 Jun 01/95



Outboard Wing Fixed Leading Edge Thermal Anti-Icing Duct Seal Door Assembly  
 Figure 2

**57-41-10**

ILLUSTRATED PARTS LIST  
 01.1 Page 1014  
 Jun 01/95


**BOEING**  
 COMPONENT  
 MAINTENANCE MANUAL

FIG. & ITEM	PART NO.	AIRLINE PART NUMBER	NOMENCLATURE 1234567	EFF CODE	QTY PER ASSY
02- -1	114T0201-23		DOOR ASSY-OUTBD WING FXD LE THRM ANTI-ICING DUCT SEAL	E	RF
-1A	114T0201-27		DOOR ASSY-OUTBD WING FXD LE THRM ANTI-ICING DUCT SEAL	C	RF
R -1B	114T0201-31		DOOR ASSY-OUTBD WING FXD LE THRM ANTI-ICING DUCT SEAL	G	RF
-5	114T0201-24		DOOR ASSY-OUTBD WING FXD LE THRM ANTI-ICING DUCT SEAL	F	RF
-5A	114T0201-28		DOOR ASSY-OUTBD WING FXD LE THRM ANTI-ICING DUCT SEAL	D	RF
R -5B	114T0201-32		DOOR ASSY-OUTBD WING FXD LE THRM ANTI-ICING DUCT SEAL	H	RF
10	MS24665-153		.PIN-COTTER	C-H	1
15	NAS6703DG48		.BOLT- (OPT ITEM 15A USED WITH ITEM 20) (OPT ITEM 15B USED WITH ITEM 20) (USED WITH ITEM 20A)	C-H	1
-15A	114T0201-13		.BOLT- (ALT FROM NAS6703-46) (OPT ITEM 15 USED WITH ITEM 20A) (OPT ITEM 15B USED WITH ITEM 20) (USED WITH ITEM 20)	C-H	1
-15B	NAS6703DG46		.BOLT- (OPT ITEM 15 USED WITH ITEM 20A) (OPT ITEM 15A USED WITH ITEM 20) (USED WITH ITEM 20)	C-H	1

57-41-10

 ILLUSTRATED PARTS LIST  
 01.1 Page 1015  
 Jun 01/95

FIG. & ITEM	PART NO.	AIRLINE PART NUMBER	NOMENCLATURE 1234567	EFF CODE	QTY PER ASSY
02-20	BACW10BP3DP		.WASHER- (V10630) (SPEC BACW10BP3DP) (USED WITH ITEMS 15A, 15B)	C-H	1
20A	BACW10BP3DP		.WASHER- (V10630) (SPEC BACW10BP3DP) (USED WITH ITEM 15)	C-H	2
25	BACN10JD3		.NUT- (V15653) (SPEC BACN10JD3) (OPT BACN10JD3 (V56878)) (OPT BACN10JD3 (V72962)) (OPT BACN10JD3 (V92595))	C-H	1
R 30	114T0224-1		.HINGE ASSY	C-H	1
35	BACB28X3F040		..BUSHING	C-H	2
40	114T0224-2		..HINGE	C-H	1
R 45	114T0224-5		.HINGE ASSY	C-H	1
50	BACB30NM3K4		ATTACHING PARTS		
55	AN960PD10		.BOLT	C-H	2
60	H10-3BAC		.WASHER	C-H	2
			.NUT- (V15653) (SPEC BACN10JC3) (OPT NS202101-02 (V80539)) (OPT RMLH9075-3W (V72962)) (OPT T6S1032J (V71087)) (OPT VN303A02 (V92215)) (OPT 96-02 (V80539)) (OPT BRH10A3 (V52828))	C-H	2
			-----*		

57-41-10

 ILLUSTRATED PARTS LIST  
 01.1 Page 1016  
 Jun 01/95


**BOEING**  
 COMPONENT  
 MAINTENANCE MANUAL

FIG. & ITEM	PART NO.	AIRLINE PART NUMBER	NOMENCLATURE 1234567	EFF CODE	QTY PER ASSY
02-					
R 65	BACB28X3M040		..BUSHING	C-H	2
70	114T0224-6		..HINGE	C-H	1
R 75	114T0220-19		.HINGE ASSY	C,E,G	1
R -80	114T0220-20		.HINGE ASSY ATTACHING PARTS	D,F,H	1
85	BACB30NN3K6		.BOLT	C-H	4
90	G12447-1-3010-4		.NUT- (V72962) (SPEC BACN10YK3A010-4) (OPT G51948-3-1010-4 (V15653)) (OPT NS202596-3-1010-4 (V80539)) (OPT ITEM 090A)	C-H	1
R -90A	BCREFA2469		.NUT- (BACN10YK3A010CD4) (OPT ITEM 090) -----*	C-H	1
95	BACR15BA3AD		..RIVET- (SIZE DETERMINE ON INST)	C-H	2
100	BACF3T03E42-9		..FILLER	C-H	1
105	MS51923-132		..PIN-SPR	C-H	2
110	MS20253P2-388		..PIN-HINGE	C-H	1
115	114T0224-23		..HINGE HALF	C-H	1
120	114T0224-24		..HINGE HALF	C-H	1
R 125	114T0219-3		.SEAL	C-H	1
130	BACB30LR3-8		.BOLT	C-H	1
135	AN960KD10		.WASHER	C-H	1
140	H10-3BAC		.NUT- (V15653) (SPEC BACN10JC3) (OPT NS202101-02 (V80539)) (OPT RMLH9075-3W (V72962)) (OPT T6S1032J (V71087)) (OPT VN303A02 (V92215)) (OPT 96-02 (V80539)) (OPT BRH10A3 (V52828))	C-H	1

57-41-10

ILLUSTRATED PARTS LIST

01.1

Page 1017

Jun 01/95



FIG. & ITEM	PART NO.	AIRLINE PART NUMBER	NOMENCLATURE 1234567	EFF CODE	QTY PER ASSY
02-145	940CW20-6		.JUMPER ASSY- (V91812) (SPEC BACJ40AB20-6)	C-H	1
R 150	114T0220-21		.HINGE ASSY	E	1
R -150A	114T0220-33		.HINGE ASSY- (OPT ITEM 150C)	C	1
R -150B	114T0220-35		.HINGE ASSY	G	1
R -150C	114T0220-35		.HINGE ASSY- (OPT ITEM 150A)	C	1
R -155	114T0220-22		.HINGE ASSY	F	1
R -155A	114T0220-34		.HINGE ASSY- (OPT ITEM 155C)	D	1
R -155B	114T0220-36		.HINGE ASSY	H	1
R -155C	114T0220-36		.HINGE ASSY- (OPT ITEM 155A)	D	1
			ATTACHING PARTS		
160	BACB30NN3K5		.BOLT	C-H	1
165	AN960PD10		.WASHER	C-H	1
170	H10-3BAC		.NUT- (V15653) (SPEC BACN10JC3) (OPT NS202101-02 (V80539)) (OPT RMLH9075-3W (V72962)) (OPT T6S1032J (V71087)) (OPT VN303A02 (V92215)) (OPT 96-02 (V80539)) (OPT BRH10A3 (V52828))	C-H	1

57-41-10

 ILLUSTRATED PARTS LIST  
 01.1 Page 1018  
 Jun 01/95


**BOEING**  
 COMPONENT  
 MAINTENANCE MANUAL

FIG. & ITEM	PART NO.	AIRLINE PART NUMBER	NOMENCLATURE 1234567	EFF CODE	QTY PER ASSY
02-175	BACR15BA6AD		.RIVET- (SIZE DETERMINE ON INST)	C-H	1
180	BACS40R8C45F		.SHIM -----*-----	C-H	1
185	BACR15BA3AD		..RIVET- (SIZE DETERMINE ON INST)	C-H	4
190	BACF3T06J45-8		DELETED		
R 190A	BACF3T06J46-8		..FILLER	C-H	1
195	114T0220-31		..FILLER	C,E	1
R -195A	114T0220-39		..FILLER	G	1
-200	114T0220-32		..FILLER	D,F	1
R -200A	114T0220-40		..FILLER	H	1
205	MS51923-130		..PIN-SPR	C-H	2
210	MS20253P2-373		..PIN-HINGE	C-H	1
215	114T0220-27		..HINGE HALF	C,E,G	1
-220	114T0220-28		..HINGE HALF	D,F,H	1
225	114T0220-29		..HINGE HALF	C,E	1
R -225A	114T0220-37		..HINGE HALF	G	1
-230	114T0220-30		..HINGE HALF	D,F	1
R -230A	114T0220-38		..HINGE HALF	H	1
235	114T0218-5		.DOOR ASSY-BONDED	C-H	1

57-41-10

ILLUSTRATED PARTS LIST

01.1

Page 1019

Jun 01/95